

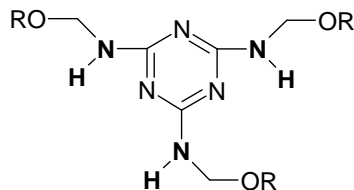
CHARACTERISTICS

Imino type, highly reactive, high solid, methylated melamine formaldehyde resin

FORM OF DELIVERY

84% in n-Butanol

STRUCTURE



SPECIFICATION

Determined per batch

Property

Viscosity DIN EN ISO3219-B

(23°C) [mPas] 3800-10670

Gardner-Holdt 25°C
ATSM D 1545-98

Z- Z4

Non-Volatile Matter/ Solids

DIN EN ISO 3251

1h, 120°C, 2g+2ml I-Butanol [%] 75-78

Foil, 45min at 45°C
ASTM D 1259

[%] 82-86

Tolerance (Xylol) (435-1200-25-9)

ml/10g 15.0-27.0

Color, APHA (435-1019)

30 max.

Haze, APHA (435-1019)

5 max.

Density (Liquids)

DIN 12791 part 1+3 at 25°C.

[g/cm³] 1.138-1.162

(435-1200-30) at 25°C

LB./Gal. 9.5-9.7

Formaldehyde Content (Sulfite)

DIN EN ISO 11402

(435-1205)

[%] <1.0
[%] 1,5 max.

Not continually determined

Flash Point (Pensky-Martens, closed cup)

analog. DIN EN 22719

[°F] 92
[°C] 28

Degree of polymerisation, DP

(GPC/PS I)

1.60

USES :

- Resimene 717 could be used in various solvent and waterborne stoving enamel paints eg like solventborne & waterborne automotive base & top coats, solvent borne coil, drum and mirror backing coatings.
- Resimene 717 is a water miscible, highly reactive, high solid melamine formaldehyde resin.
- Resimene 717 was designed to yield fast, uncatalyzed curing as low as 250°F (121°C) and fast catalyzed curing at 200°F (93°C) or lower on rigid metallic substrates.

STORAGE STABILITY:

- At temperatures up to 25°C storage stability of Resimene 717 packed in original containers amounts to at least 12 months.
- Some turbidity may occur in isolated cases but this has no effect on the product quality.



Data contained in this publication are based on careful investigations and are intended for information only. Any user is obliged to carry out tests under his own responsibility as to suitability of the product for a particular use and to investigate the possible violation of industrial property rights of third parties. Information is therefore not binding and cannot be construed as guaranteeing specific properties of products as established by law. Any liability as to the exactness and completeness of data is thus excluded. We apply our General Sales Conditions.

	World Area		Customer Order	Technical Support
INEOS Melamines, Inc. 1395 S. Marietta Parkway Bldg. 500, Suite 210 Marietta, GA 30067	North America	☎ ☐	+1888 723 2873 +1770 528 6693	+1413 730 2757 +1413 730 3444
	South America	☎ ☐	+1678 999 3172 +1770 528 6693	+1413 730 2757 +1413 730 3444
	Europe-Africa	☎ ☐	+49 (0) 69 4109 2319 +49 (0) 69 4109 2552	+49 (0) 69 4109 2310 +49 (0) 69 4109 2628
	Asia Pacific	☎ ☐	+49 (0) 69 4109 2319 +49 (0) 69 4109 2552	+49 (0) 69 4109 2310 +49 (0) 69 4109 2628
INEOS Melamines GmbH Alt Fechenheim 34 D 60386 Frankfurt, Germany www.ineosmelamines.com				

NOTICE: Although the information and recommendations set forth herein (hereinafter "Information") are presented in good faith and believed to be correct as of the date hereof, Ineos Melamines Inc. (and its subsidiaries) makes no representations or warranties as to the completeness or accuracy thereof. Information is supplied upon the condition that the persons receiving same will make their own determination as to the suitability for their purpose prior to use. In no event will Ineos Melamines Inc. be responsible for damages of any nature whatsoever resulting from the use of or reliance upon Information or the product to which Information refers. Nothing contained herein is to be construed as a recommendation to use any product, process, equipment or formulation in conflict with any patent, and Ineos Melamines Inc. makes no representation or warranty, express or implied, that the use thereof will not infringe any patent. Certain products may not be regulated or available in some world areas. NO REPRESENTATIONS OR WARRANTIES, EITHER EXPRESS OR IMPLIED, OF MERCHANTABILITY, FITNESS FOR A PARTICULAR PURPOSE OR OF ANY OTHER NATURE ARE MADE HEREUNDER WITH RESPECT TO INFORMATION OR THE PRODUCT TO WHICH INFORMATION REFERS. Where indicated, ® is a Registered Trademark of Ineos Melamines Inc.

Version 04/07 replaces version 01/06